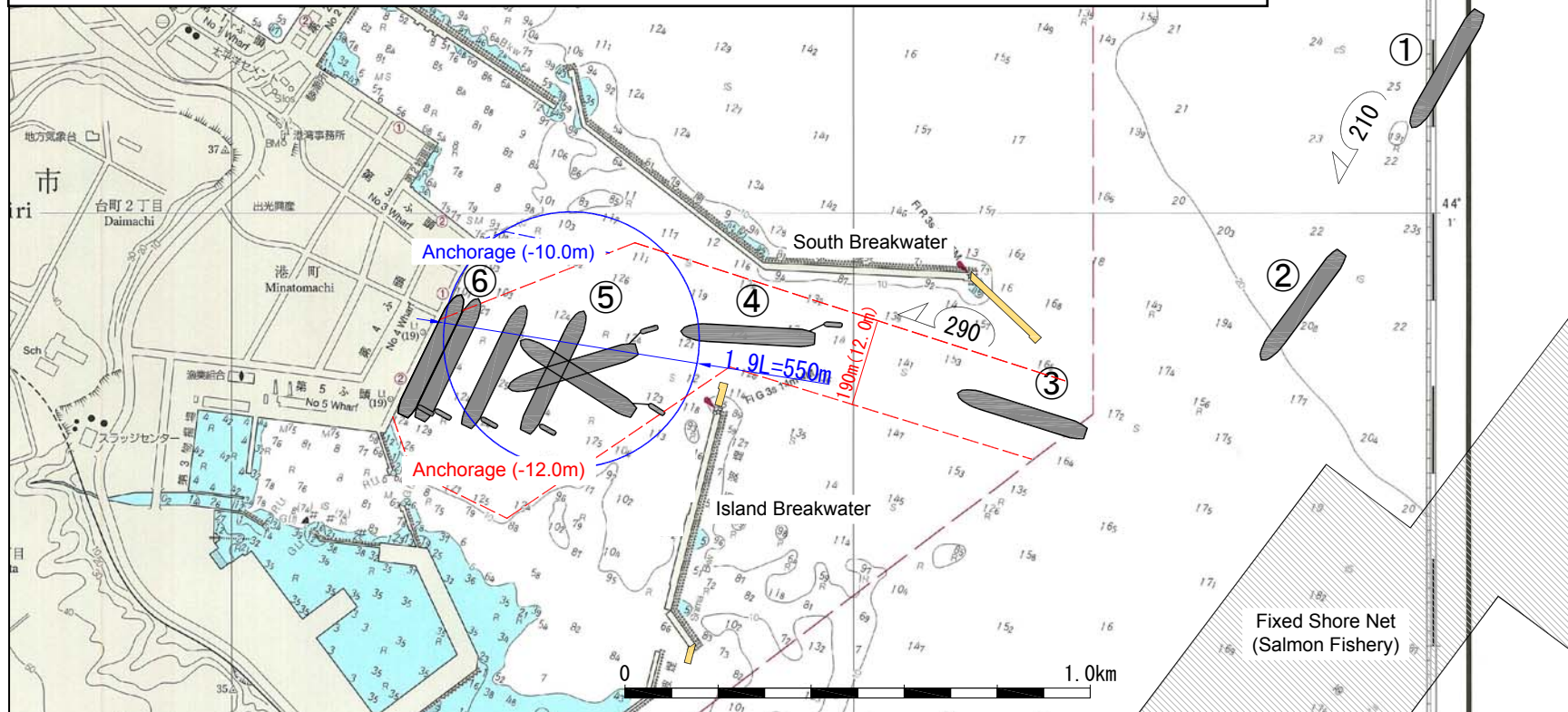
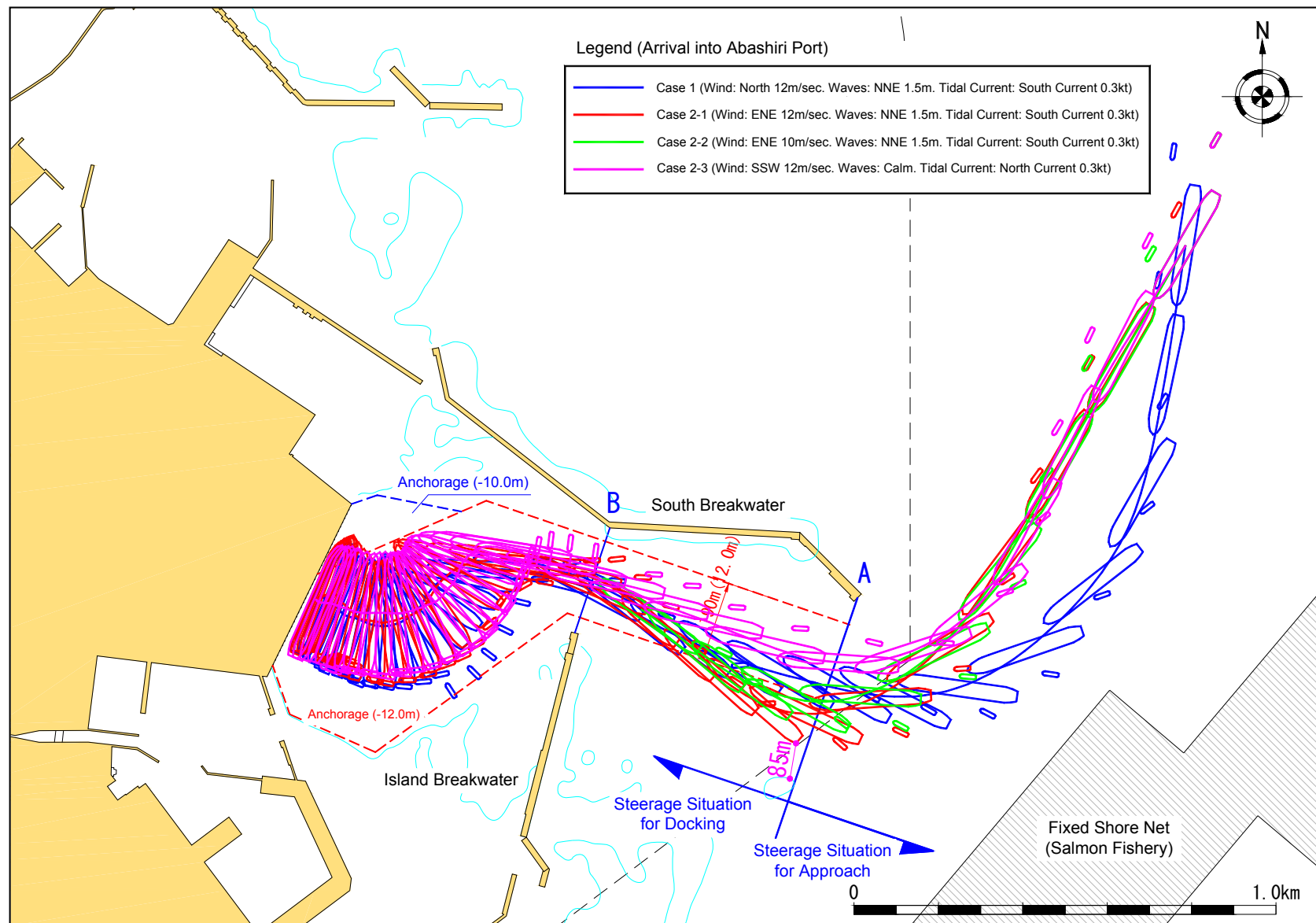


- ① From the point 1,000m northeast of the south breakwater head, the ship approaches on a course of 210 degrees, with engine Half Ahead, at a speed of 10 knots. Considering effects of the wind-tidal current, try to hold course, steering by rudder and engine and navigate to follow the 210 degree arrival route into Abashiri Port.
- ② Reduce speed by engine and assume 8 knots before the south breakwater. Using rudder and engine, veer starboard towards the harbor entrance.
- ③ Pass the vicinity of the south breakwater at around 7 knots, and set an approach course of 290 degrees toward Abashiri Port.
- ④ If needed, be accompanied by a tugboat in the starboard quarter. Further reduce speed by engine and/or tugboat, and come into harbor while controlling the hull attitude using the bow and stern thrusters, and head to the center of the anchorage in front of the target wharf.
- ⑤ By engine sternway, bring the hull to a stop in the center of the anchorage in front of the wharf, rotate to starboard using the tugboat and/or the bow and stern thrusters, and control the ship to bring the hull parallel to the wharf normal line (026 degrees).
- ⑥ Using the tugboat and the bow and stern thruster, move laterally while maintaining the hull parallel to the wharf normal line and come to pier on the port side. Furthermore, traverse speed at the time of the arrival at the shore shall be less than 6cm/sec.



Steerage Example for Arrival at Abashiri Port (Head out port side)
 116,000 GT Class Passenger Ship
 Total Length 288.33m



Steerage Track Chart for Arrival in Abashiri Port
 116,000 GT Class Passenger Ship
 Total Length: 288.33m