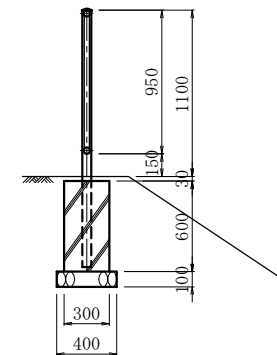


防止柵工-22-H (22)
転落防止柵
縦桟型、柵高1.1m、プレキャストコンクリートブロック建込
積雪ランク1、支柱間隔2.0m

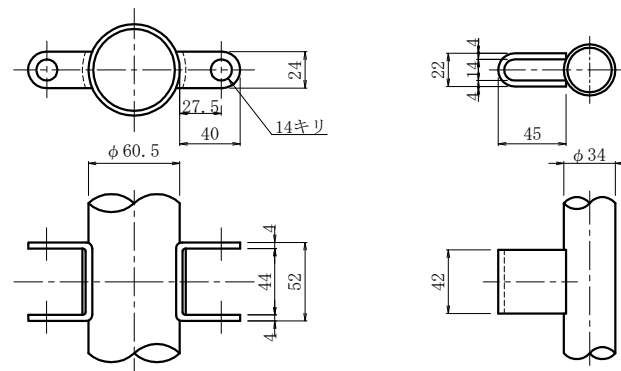
A-A 断面



Technical drawing of a steel beam-to-column connection, showing a side elevation. The drawing includes the following components and dimensions:

- Beam Dimensions:** Total length is 4000 mm, divided into two 2000 mm segments by a central support. The beam height is 1100 mm.
- Reinforcement:**
 - 縦材 (Vertical Bars):** $\phi 21.7 \times 1.9$
 - 横下枠 (Bottom Horizontal Bar):** $\phi 42.7 \times 2.3$
 - 縦枠 (Vertical Bar):** $\phi 34 \times 2.3$
 - 横上枠 (Top Horizontal Bar):** $\phi 42.7 \times 2.3$
- End and Intermediate Plates:**
 - 端末支柱 (End Plate):** $\phi 60.5 \times 3.2$
 - 中間支柱 (Intermediate Plate):** $\phi 60.5 \times 3.2$
- Other Dimensions:**
 - Distance from end to first intermediate plate: 147 mm.
 - Distance between intermediate plates: 10@150=1500 mm.
 - Distance from last intermediate plate to end: 147 mm.
 - Distance from end to first vertical bar: 1905 mm.
 - Distance between vertical bars: 100 mm.
 - Distance from last vertical bar to end: 1905 mm.
 - Distance from end to first horizontal bar: 150 mm.
 - Distance between horizontal bars: 100 mm.
 - Distance from last horizontal bar to end: 150 mm.
 - Distance from end to first vertical bar: 150 mm.
 - Distance between vertical bars: 100 mm.
 - Distance from last vertical bar to end: 150 mm.
 - Distance from end to first horizontal bar: 150 mm.
 - Distance between horizontal bars: 100 mm.
 - Distance from last horizontal bar to end: 150 mm.

パネル



(1 基当り)

項 目	規 格	単位	数 量	摘 要
コンクリート基礎	0.30×0.30×0.60	箇所	1	
床仕上げ		m ²	0.16	
基 礎 材	(敷厚 10cm	m ²	0.16	

1. 塗装仕上は下地亜鉛メッキ（Z27以上）＋粉体塗装又は焼付塗装（ 20μ 以上）とする。
2. メッキ仕上は、JISH8641.2種による。